



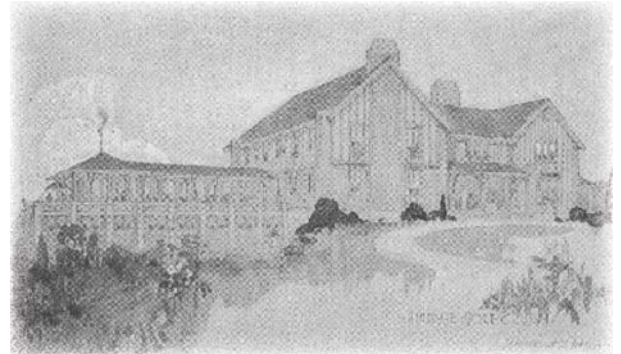
Hinsdale Golf Club
established 1898

GUEST INFORMATION

Mission: To promote, foster and encourage the finest of the game of golf and other athletic and social activities in which Club members may wish to participate.

ABOUT HINSDALE GOLF CLUB

The Hinsdale Golf Club of today would amaze its founders. More than one hundred years ago they traveled by foot or horseback to play on rough pasture land turned into a golf course by a group of recent converts to a sport still obscure to Americans. The informal group grew and the Club moved to the west and then to the west again. It survived fire, wars, financial reversals, and more as it evolved into the Hinsdale Golf Club of today – a special place for its members and friends, just as it was a century ago.



CLUB POLICIES

PROPER GOLF COURSE ATTIRE - Proper golf attire is required at all times while using the golf course and practice facilities. Golf attire should be consistent with accepted standards of propriety and good taste. Examples of improper attire for men, women and children are: Jeans, shorts that are too long or short (shorts should be worn below mid-thigh and above the knee), cutoff shorts, strapless tops, tank tops, shirts with neither sleeves nor collars (full coverage shirts with either sleeves or collars are appropriate for women only). Other examples of improper attire include: high top shoes, caps with visors pointing other than forward, and shirttails worn outside of pants, unless they are made to be worn that way. Mock turtlenecks are considered collared shirts.

CELL PHONES - Members and guests are encouraged to use the “house phones” located throughout the Clubhouse, Golf Pro Shop, Pool, Snack Shop, Paddle Hut or Tennis Pro Shop. Accordingly, the use of cellular phones is not permitted on the grounds of the Hinsdale Golf Club, with the exception of the Clubhouse Locker Rooms and the Parking Lot, or in the case of emergencies related to health and safety. Such devices must be on silent ring or vibrate mode when on Club grounds.

TIPPING - With the exception of valet, locker room attendants and caddies, Hinsdale Golf Club maintains a “no tipping” policy.

DIRECTIONS

From the TriState Toll Road (I-294)

Exit Ogden Avenue Westbound and proceed for approximately 1.5 miles. Turn south onto Madison Street and proceed for approximately .5 mile. Turn Westbound on Chicago Avenue and proceed for approximately 1 mile. The Club entrance is on the North side of the road.

From the East West Toll Road (I-88)

Westbound traffic exit south on Midwest Road. Continue South on Midwest Road (Which becomes Cass Avenue) for approximately 3.0 miles. Turn East on Naperville Road. Naperville Road becomes Chicago Avenue. Continue East bound on Chicago Avenue for approximately 2.0 miles. Club entrance is on the North side of the road just before the Prospect Street traffic signal.

From the Stevenson Expressway (I-55)

Exit Kingery Highway (Route 83) North bound and continue for approximately 3.5 miles. Exit Westbound on 55th Street continue for approximately .5 mile and turn North on Prospect Avenue. Continue North on Prospect for approximately .5 mile and turn West on Chicago Avenue. The entrance to the Club will be immediate on the North side of the road.

